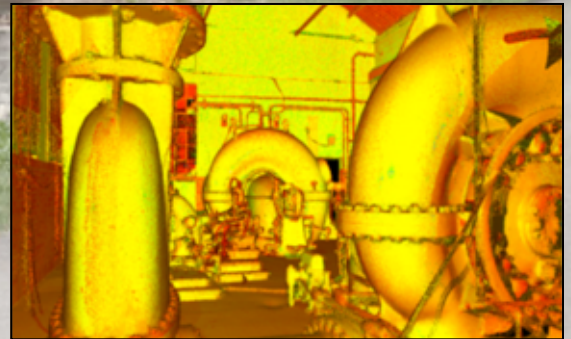




### LOGAN DAM POWERHOUSE **Laser Scanning/Modeling Project**



#### PROJECT DESCRIPTION:

- ◆ The powerhouse was built in 1923 by Logan City and is located about two miles up Logan Canyon. It has continuously operated since as part of the City's municipal power department. It currently houses two 750 KW Francis turbines. The powerhouse has been expanded a couple of times over the years but the oldest part of the building dates to 1923.
- ◆ The use of 3D Laser Scanning technology on this project created a highly accurate representation of existing conditions of the powerhouse to aid in the design and installation of new mechanical equipment and future modifications.
- ◆ The Powerhouse was scanned and modeled by McNeil Engineering so that precise details could be taken from the model. The High Definition scanner was able to collect data that was unattainable using traditional survey methods.
- ◆ McNeil Engineering was able to provide more accurate data in a shorter amount of time as compared to using traditional survey methods, thus providing a lower cost to the client.



Michael D. Hoffman PLS  
Email: [mike@mcneileng.com](mailto:mike@mcneileng.com)  
801-255-7700 x. 138