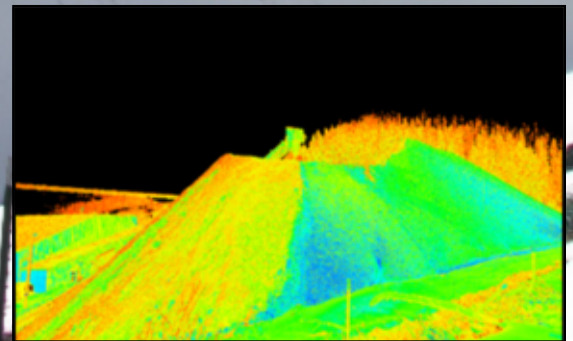


SKYLINE MINE: COAL STOCK PILE VOLUME Mining Project



PROJECT DESCRIPTION:

- ◆ Skyline Mine is located in Eccles Canyon, approximately 5 miles southwest of Scofield, Utah. The mine began operation in 1981 and sales for the most recent three-year period average about 2.5 million tons per year.
- ◆ Using laser scanning technology, McNeil Engineering was tasked with scanning the coal stock piles to determine precise volume measurements. These measurements provide Skyline Mine the quality assurance needed to accurately report volumes on a continued basis.
- ◆ Laser scanning technology provides a safer working environment for the survey crew, giving them the ability to capture accurate survey data from a distance.
- ◆ McNeil Engineering is able to provide more accurate data in a shorter amount of time as compared to using traditional survey methods, thus providing a lower cost to the client.



Michael D. Hoffman PLS
Email: mike@mcneileng.com
801-255-7700 x. 138