



McNEIL ENGINEERINGTM

Economic and Sustainable Designs, Professionals You Know and Trust

EPICENTER

FALL 2023



FALL IS UPON US

As we embrace the vibrant hues of Fall, I am thrilled to connect with you and share the excitement that fills the air at McNeil Engineering. As we approach the close of 2023, we are incredibly grateful. Four decades of dedicated service in the great state of Utah have shaped us from a humble engineering outfit into a multifaceted enterprise offering a diverse array of services spanning Surveying, Civil and Structural Engineering, Landscape Architecture, and Roofing and Paving Consulting. Our footprint has expanded across the great State of Utah and throughout the surrounding region.

I extend my deepest gratitude to each department and its managers, whose unique perspectives and wealth of experience have been instrumental in forging the cohesive and dynamic team we are today. My sincere thanks go out to them.

I want to express profound appreciation to our clients. It's your unwavering trust, year after year, that motivates and fuels our commitment to delivering quality and reliable service in every project and interaction. As we look ahead, let's toast to many more years of collaboration and shared success in making Utah even greater.

Warm regards,

Mike Hoffman, President

MCNEIL ENGINEERING
FALL 2023
NEWSLETTER

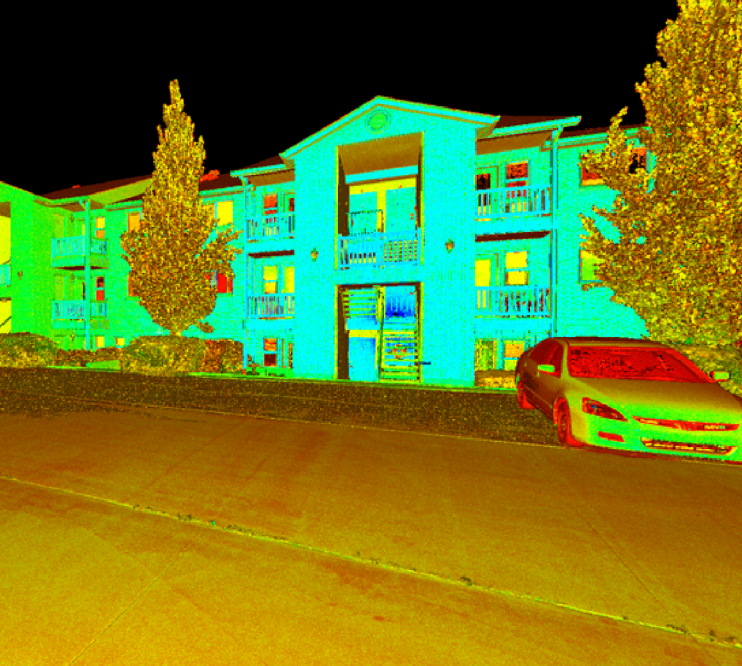
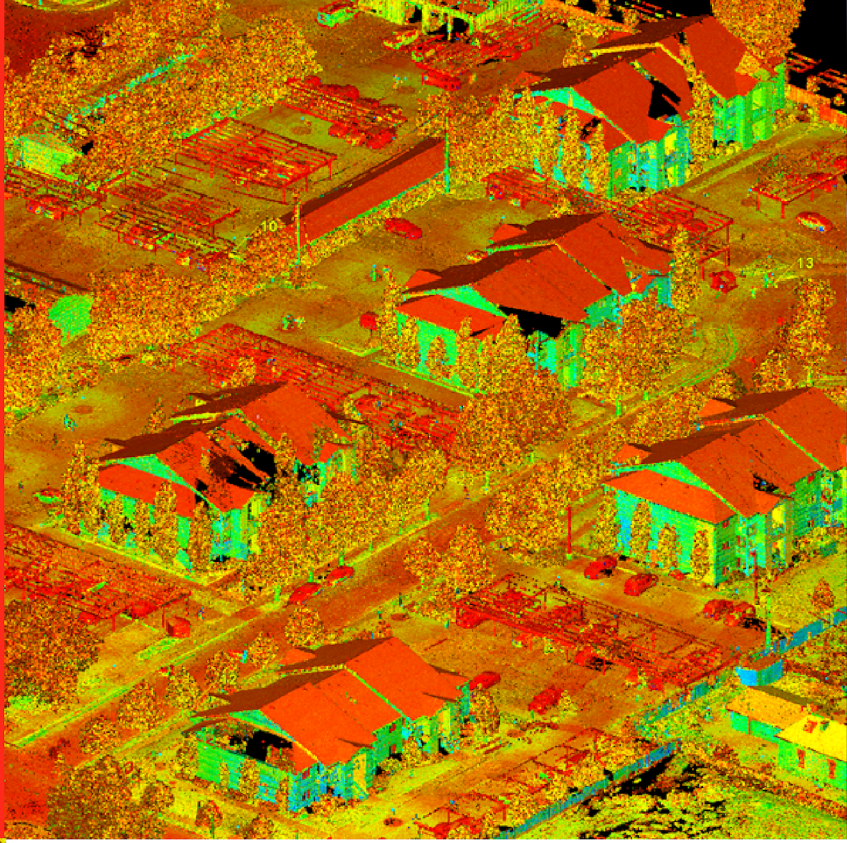
EPICENTER

Forty Years

Project Highlights

Employee Spotlight

LEGACY COURT



Contact

Michael D. Hoffman, P.L.S.
Survey Manager
mike@mcneileng.com
801.255.7700

MCNEIL SURVEYING

In the ever-evolving land development arena, McNeil Engineering's Surveying Department shines with its pivotal role in the Legacy Court Commercial Development project.

Central to this achievement is our Boundary Survey. Delving deep into subject parcel intricacies, revealing relationships between enhancements and boundaries. Assisted by the Leica P40 scanner, our experts gather data with unparalleled accuracy, transcending traditional limits.

Driven by that desire for precision and innovation, our experienced surveying professionals have helped set new industry standards here in the state of Utah. Staying ahead of new technological developments our team is constantly implementing the latest technologies into our work processes. We do not however let that technology take the place of what has been most important during our 40 years in business, great communication, quality service, and honesty in everything we do.

Under the guidance of Surveying lead Dave Draper, with our capable team in the field, meticulous data collection forms the bedrock of this project. This careful attention to detail provides reliable information that developers and contractors can count on throughout the lifespan of the project.

The Legacy Court project not only showcases our surveying expertise but also our seamless cross-departmental collaboration. This synergizes with our Consulting Department, led by Carl Greene, highlighting McNeil Engineering's ability to navigate complex projects.





Renderings courtesy of Utah City



Contact

Robert Poirier
Civil Engineering Manager
rob@mcneileng.com
801.255.7700



MCNEIL CIVIL ENGINEERING

We're thrilled to announce our collaboration with an esteemed consortium, including The Flagship Cos., Woodbury Corp., and others, to bring you Utah City—an innovative, sustainable development that redefines urban living. McNeil Engineering is excited to provide Civil Engineering services for this project.

Discover the future of sustainable living and urban connectivity at Utah City, an awe-inspiring over 700-acre master-planned development located on the eastern shore of Utah Lake. This visionary project is set to become Utah County's largest mixed-use community, focusing on sustainability, walkability, and innovation.

Legacy Development: Utah City is not just a development; it's a legacy that will evolve with time, incorporating cutting-edge technologies and design to adapt to the needs of future generations. A true gift to Utah County, this expansive project is a testament to responsible urban planning.

Sustainability & Walkability: Built for everyone, Utah City prioritizes sustainability and walkability. With its strategic location accessible from various exits of Interstate 15 and the Vineyard FrontRunner station, it's designed to seamlessly integrate into the region's transportation network.

Diverse Living: Utah City will have an array of housing types, allowing a diverse demographic of residents to live, work and enjoy Utah City. Designing diverse housing types allows choice in style and size. Even within Utah City, you will find denser neighborhoods and those that offer more space—creating a vibrant community no matter your stage of life. Multi-family dwellings and forthcoming projects like the Huntsman Cancer Institute, boasting over 150 patient beds, ensure that this development enriches the lives of all its residents.

Unprecedented Mixed-Use Space: Prepare to be captivated by the 17+ million square feet of mixed-use space, featuring living areas, shopping districts, dining venues, entertainment hubs, and hospitality centers. A 12-acre promenade at the heart of the town center, running from the Vineyard FrontRunner station to Utah Lake's shores, adds to the allure.

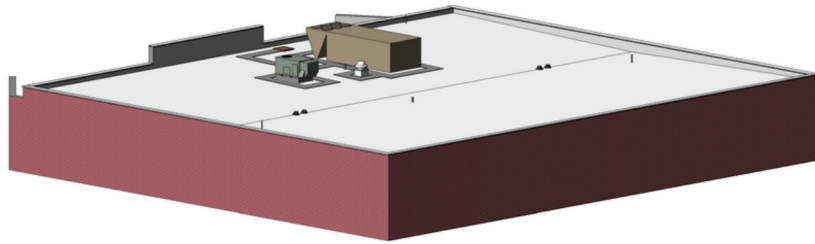
Green Spaces & Connectivity: Utah City embraces green living with 50 acres of planned open green space, parks, and pathways that seamlessly integrate nature into the urban fabric. This approach encourages community connections and recreation, making it a vibrant place to live, work, and play.

Embracing Growth: Anticipating Utah's rapid growth, Utah City stands as a symbol of the state's evolving landscape. With the population projected to reach 5.2 million by 2060, this development's thoughtfulness is aligned with the region's needs.

Visit the official website, <https://utahcity.com/>, to explore the future of urban living in Utah City. Embrace innovation, sustainability, and a community designed to evolve with the times. Utah City is not just a place to live—it's an experience that transforms how we envision city living.



ROY ELEMENTARY



MCNEIL CONSULTING

The McNeil Engineering Consulting department, under the capable leadership of Carl Greene, proudly showcases their exemplary work in the revitalization of the Roy Elementary roof, nestled within the Weber School District. Collaborating with the Weber School District team has been a testament to effective teamwork and professionalism.

Northern Utah schools and facilities grapple with the relentless challenges posed by the region's unpredictable weather and climate.

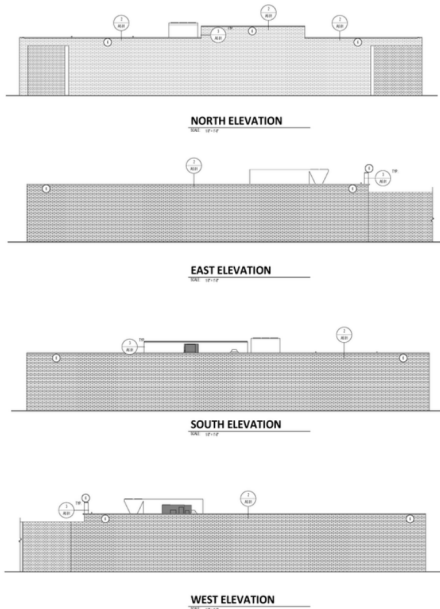
McNeil Consulting's commitment to delivering quality service and enduring solutions is paramount in safeguarding these institutions against potential roofing and parking lot damages. Their work is not merely about construction; it's about preserving and maximizing the longevity of existing structures.

The scope of work for the Roy Elementary Re-Roof project encompasses meticulous attention to detail, including the removal and disposal of loose gravel, the installation of new drainage systems, and the rebuilding of mechanical curbs. McNeil Consulting's dedication to quality extends to their choice of materials, exemplified by the use of 80 mil PVC fully adhered roofing systems, bolstered by the manufacturer's recommendations.

The McNeil Consulting team is driven by a commitment to excellence.

Their efforts extend beyond construction; they encompass comprehensive project management, from roof hatch removal and reinstallation to the creation of walk pads for easy rooftop access. This holistic approach ensures that their solutions stand the test of time.

In the face of the unique challenges posed by the region's climate, McNeil Engineering Consulting's partnership with the Weber School District stands as a testament to their unwavering dedication to quality and durability, ultimately protecting valuable properties and infrastructure from the harsh northern Utah elements.



Contact

Carl Greene
Consulting Manager
carl@mcneileng.com
801.255.7700



RESHAPING EDUCATION



MCNEIL LANDSCAPE ARCHITECTURE

The Living Schoolyards Act, a groundbreaking policy introduced by Senator Martin Heinrich with strong support from the American Society of Landscape Architects (ASLA), is gaining momentum as a pivotal force in reshaping the educational landscape. This multifaceted initiative champions climate resilience, biodiversity, enhanced educational opportunities, and the well-being of students and communities alike.

What makes this legislation even more exciting for our team is that it mirrors a vision that our landscape architecture team at McNeil Engineering, under the leadership of Scott Schoonover, has passionately advocated and championed for over a decade. Our unwavering commitment to creating innovative outdoor spaces in educational institutions has been exemplified through our ongoing collaboration with Weber State University, located in the scenic foothills of the Wasatch Mountains in Ogden, Utah.

McNeil Engineering, in partnership with WSU Campus Planning & Construction (CPC), has embarked on a journey to revitalize the campus environment. This transformative project began with a landscape remodel at the north entrance of the Student Services Center, sparking a series of landscape and site upgrades across the campus. Notably, we rejuvenated the Shepherd Union Building's outdated and overgrown landscape and initiated a comprehensive overhaul of the Science Lab's south site and irrigation system. These improvements included a much-needed renovation of the main campus pump house and filtration system.

The significance of these projects extended far beyond mere aesthetics; they created vibrant, interactive outdoor spaces where students could engage with the natural world. The success of these endeavors echoes the very principles outlined in the Living Schoolyards Act – spaces that inspire, connect, and promote the holistic growth of students, instilling an environmental consciousness that transcends the classroom.

McNeil Engineering's long-term commitment to pioneering these design and outdoor space concepts in schools stands as a testament to the transformative potential of well-planned, nature-centric environments. As the Living Schoolyards Act continues to gain support, it underscores a collective vision where outdoor spaces in educational institutions are more than just enhancements; they are catalysts for growth, sustainability, and future environmental stewardship, a vision that we've championed and brought to life in partnership with Weber State University and many other partners over the years!



Contact

Scott Schoonover
Landscape Architecture Manager
scott@mcneileng.com
801.255.7700



CAMBER ICE HOUSE



MCNEIL STRUCTURAL ENGINEERING

The impressive collaboration between GFF Architects and Brian Warner of our Structural Engineering team is presented here, resulting in a remarkable multifamily development set to grace Salt Lake City, Utah in the coming months.

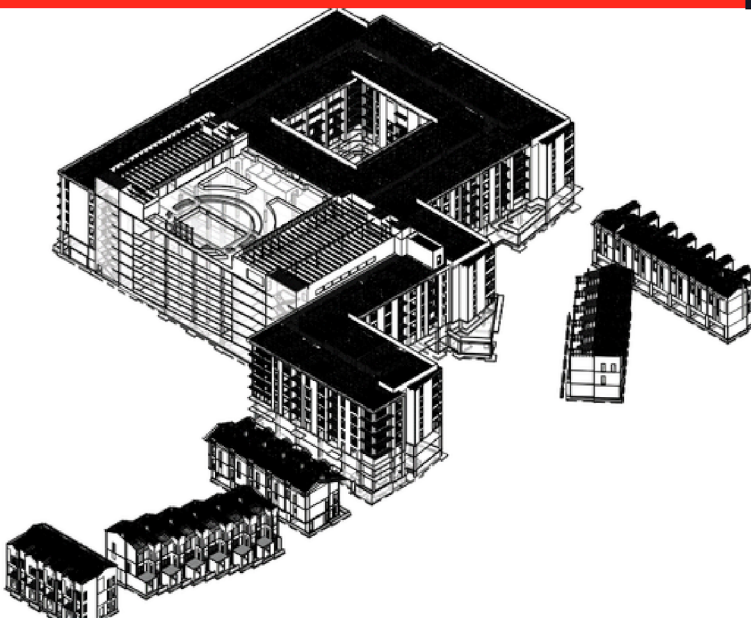
Appreciate the meticulous work of the GFF team, evident in the design of a (7) story podium wrap building that artfully combines concrete and wood construction. The building offers 394 thoughtfully designed units and 28 townhomes, fostering a cohesive community with ample community-oriented space to enjoy!

Explore the thoughtfully designed amenities, including an eighth-level sanctuary featuring a club, fitness spaces, a panoramic pool deck, and a bowling alley, showcasing the architects' and engineers' shared vision. In addition, notice the carefully chosen materials that enhance the building's facade and the addition of dynamic corner units that provide exceptional views, demonstrating the attention to detail from GFF Architects and their amazing design team.

Engage with street-level amenities that connect the building with the city, enriching the pedestrian experience and reflecting the team's collaborative efforts., experience the sustainable exterior zones, including parks and rooftop areas, contributing to an urban oasis aligned with the project's holistic approach.

Envision the rooftop pool deck that is nestled among fitness and club spaces, offering a relaxing outdoor retreat that embodies the joint creativity of the architects and structural engineer.

Discover a reimagined urban lifestyle at Endeavor Ice House, where the expertise of GFF Architects and Brian Warner from McNeil Structural Engineering converge to create a community-focused living space.



Contact

Brian Warner, SE, LEED AP
brian@mcneileng.com
801.255.7700 x 111



EMPLOYEE SPOTLIGHT



EUGENE L'HEUREUX

How long have you worked at McNeil Engineering?

Almost a year.

What do you find the most challenging working at McNeil Engineering?

Having smaller projects where you are the only person on a project. Smaller projects can be easier to manage but it took a few months before I was totally comfortable with being the main person on all my projects. I have always been on teams where you have a variety of people to bounce ideas off or pull experience from several backgrounds. I have gotten used to it and it is an awesome feeling to not have other people working in my CAD files.

What do you like most about working at McNeil Engineering?

The short commute and plenty of places to get food around the office.

What has been your favorite project at McNeil Engineering?

Only being here for about 9 months means that not many of the projects I started up have been completed yet but the Ogden Exchange project always has a curveball.

Where were you born and raised?

Seekonk, MA

Motto or personal mantra?

Good times are priceless.

What are three career lessons you've learned thus far?

- The ADS design tool is awesome.
- Maintaining stormwater BMPs is more important than installing them.
- Watching somebody install a Site design feature in the field will teach you something much faster than the office can.

What is something you've always wanted to try and never have?

Downhill mountain biking

What do you like to do in your spare time?

Almost every day after work I head out to coach or play Ultimate frisbee.

This is the one on a football field where when you catch the disc you must stop running and pass to a teammate before you can play again. I play on a local Semi-Pro team and a local club team as well as coaching the University of Utah's Men's Team. This takes me all around the country most weekends to play/coach.

What are your top 5 bucket list items you want to accomplish?

1. Visit every national park
2. Drive from coast to coast on the old Route 6 from Provincetown, MA to Long Beach, CA
3. Snowboard in Japan
4. Win a national championship.
5. Make a meaningful amount of money from Ultimate Frisbee.

What is your hidden talent?

I grew up playing a lot of music on the drums, guitar, and trumpet. I can throw a disc pretty far too.

